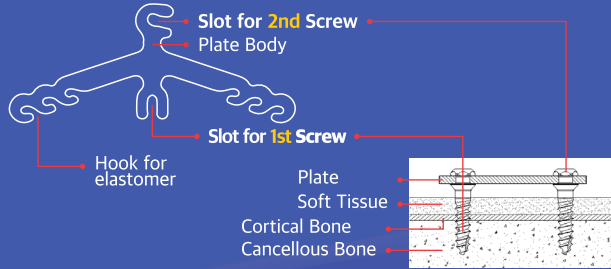


# Double Fork Plate

## Specification



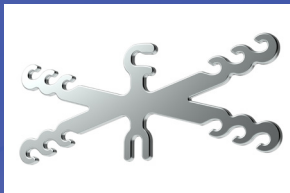
## Components



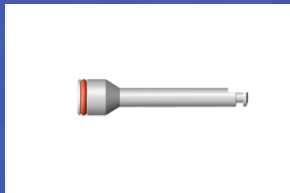
APW1502AR



APW1502MR



APDW1502

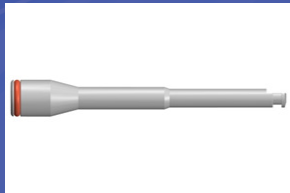


Short Engine Blade  
SEB-U(BS)



Micro Implants

OAS-T1506LN (φ 1.5 x 6mm)  
OAS-T1507LN (φ 1.5 x 7mm)



Long Engine Blade

LEB-U(BS)

## Procedure



1  
인상채득모델을 기반으로 Double fork plate를 bending 한다

\*Bend Double fork Plate based on impression



2  
1번 Screw 식립 후, Screw 홈에 Plate 하단부를 장착

\*Insert 1st screw and the plate on the neck of 1st screw



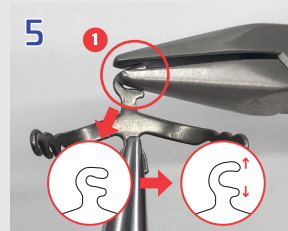
3  
Plate를 자리에 위치 후 상단부 홈에 2번 Screw 약 4~5회 회전함 (위치 확인)

\*Insert 4th screw 1/3



4  
2번 Screw 1/3 식립 후, plate를 제거 하여 1번 Screw와 같은 높이로 식립함

\*Rotate the plate and finish to insert 2nd screw



5  
제거한 Double fork plate를 1번 screw와 체결하기 전, ①번 입구 부분을 플라이어 로 약간 확장 한다

\*Before engaging Double fork plate to Screws, The head of plate ① should be slightly opened with a plier

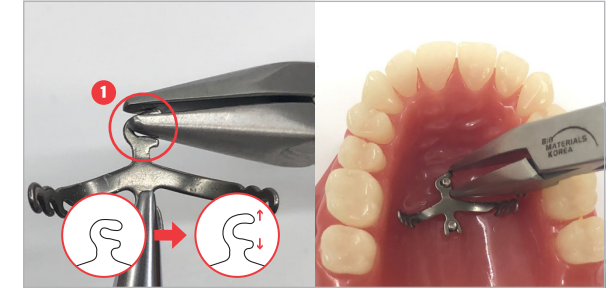


6  
Plate를 장착 후, 상단부를 Plier로 고정한다

\*Fix the head of plate with plier

## Precaution

### 1. Adjust for The head of plate



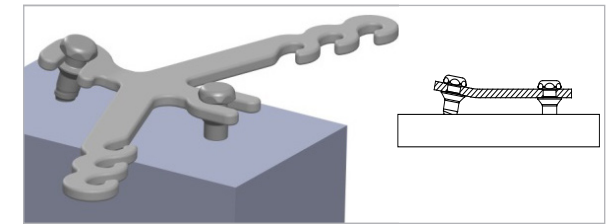
※ Double fork plate를 screw와 체결하기 전, 1번 입구 부분을 플라이어 로 약간 확장 한다

Before engaging Double fork plate to Screws, The head of plate ① should be slightly opened with a plier

※ Double fork plate를 screw와 체결 후, 1번 입구 부분을 플라이어 로 Close 한다

After engaging Double fork plate to Screws, The head of plate should be closed with a plier

### 2. Adjust for The head of plate



※ Screw의 높이가 맞지 않거나, 수직으로 식립되지 않았을 경우 Plate를 Bending 후 장착합니다

If the screw is not place vertically, Install the plate after bending it